

# CornishMetals

## Developing A Strategic Tin Asset in the UK

---

ForumOne  
November 2023

AIM / TSX-V : CUSN

All information ©Cornish Metals Inc. All Rights Reserved.

# Disclaimer

This presentation may contain forward-looking statements which involve known and unknown risks, uncertainties and other factors which may cause the actual results, performance, or achievements to be materially different from any future results, performance or achievements expressed or implied by such forward-looking statements.

Forward looking statements may include statements regarding exploration results and budgets, resource estimates, work programs, strategic plans, market price of metals, or other statements that are not statements of fact.

Although the expectations reflected in such forward-looking statements are reasonable, there is no assurance that such expectations will prove to have been correct. Various factors that may affect future results include, but are not limited to: fluctuations in market prices of metals, foreign currency exchange fluctuations, risks relating to exploration, including resource estimation and costs and timing of commercial production, requirements for additional financing, political and regulatory risks. Accordingly, undue reliance should not be placed on forward-looking statements.

All technical information contained within this presentation has been reviewed and approved for disclosure by Owen Mihalop, (MCSM, BSc (Hons), MSc, FGS, MIMMM, CEng), Cornish Metals' Qualified Person as designated by NI 43-101.

Readers are further referred to the technical reports on the company's website and on SEDAR for more detailed information.



# Mission Statement

To bring responsible tin mining to Cornwall to the benefit of our stakeholders, and to sustainably supply a critical metal to the clean energy transition in the UK and beyond.





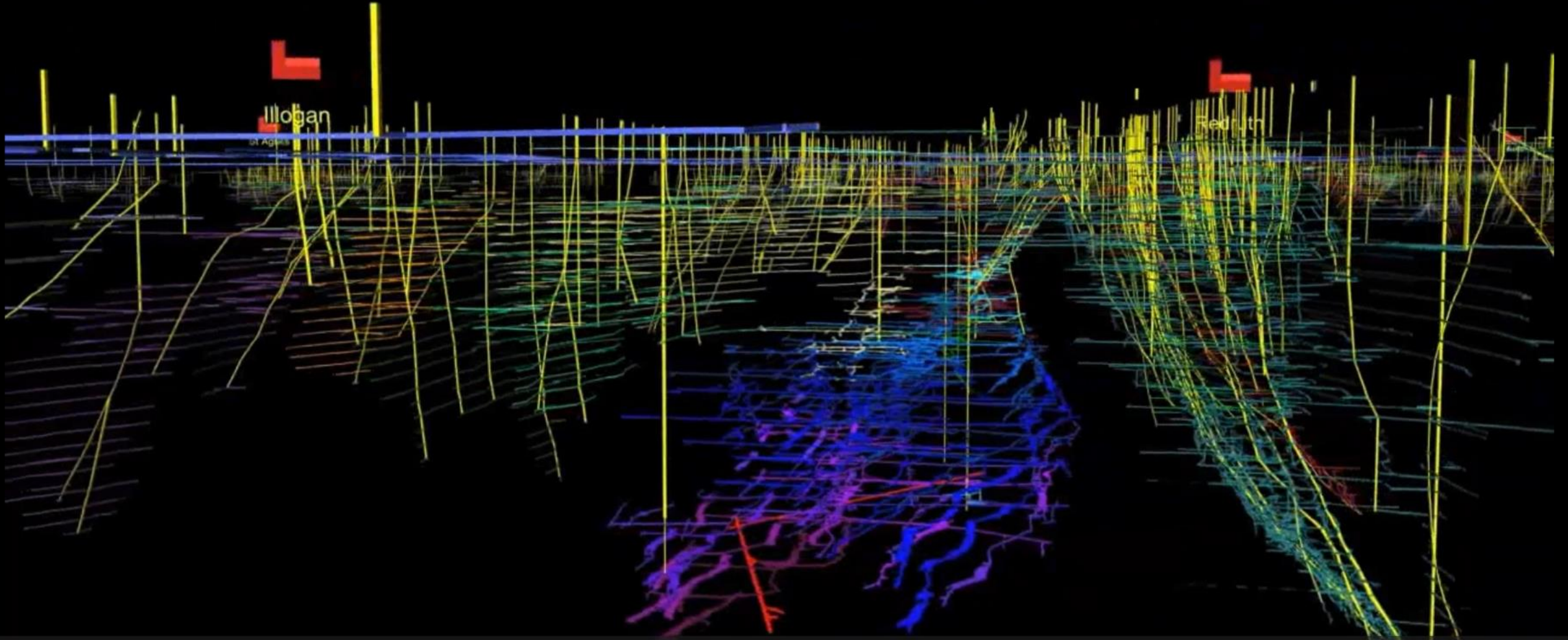
# What is South Crofty?

Potential to be a long life, modern, underground tin mine

- A strategic tin asset in the UK
- High-grade underground tin project
- Proven operational history
- Small surface footprint
- Zero surface waste
- Positive environmental benefits
- Positive economic impact



# 3D View of South Crofty





# What is Tin?



The “glue”  
in electronics



## TIN'S PROPERTIES

Flexible, malleable, non-toxic, corrosion resistant and highly conductive

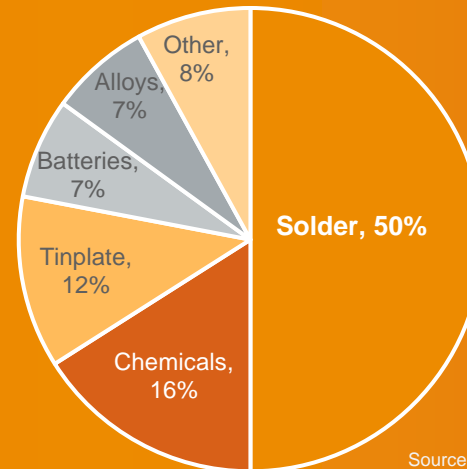
## TRADITIONAL AND CURRENT USES

Bronze, tin plate, white metal alloys, glass floating, PVC plastic production, food packaging

## CURRENT AND FUTURE USES

Solder - electronics & electrification, batteries, robotics, 5G data networks, solar panels, touch screen displays

**Global Refined Tin Use**  
(2022 - 377kt)



**Packaging**  
(Food & Beverages)



**Glass**

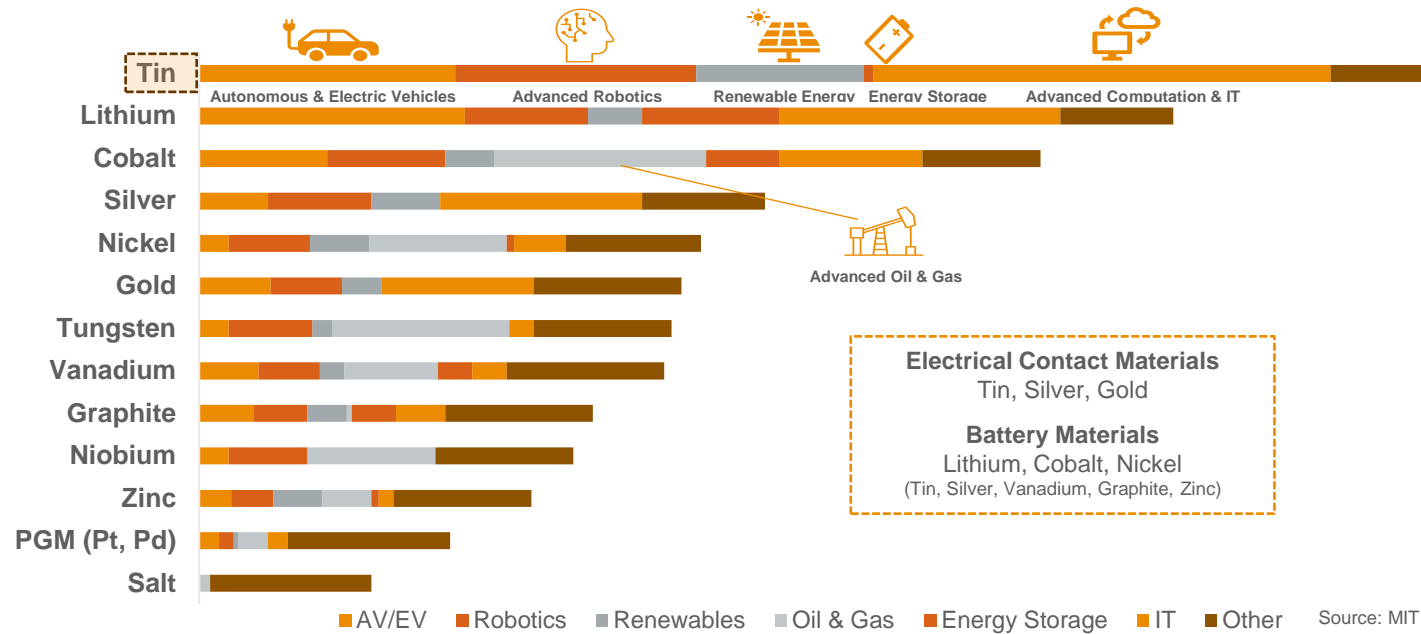


**Electronics**



**Automotive**

# Why Tin?



Metals most impacted by new technology

- Tin is fundamental to modern society – The “glue” in all electronics
- “Critical Mineral” designation – UK / USA / Canada
- Security of Supply - no primary tin production in Europe or North America
- 75% of mine production from Asia (China, Myanmar, Indonesia)
- Technology supercycle driving rising demand for Tin
- Tin demand projected to grow over 40% by 2030 (International Tin Association)
- Constrained supply unlikely to meet future demand resulting in increasing deficits

# South Crofty Mineral Resource Estimate

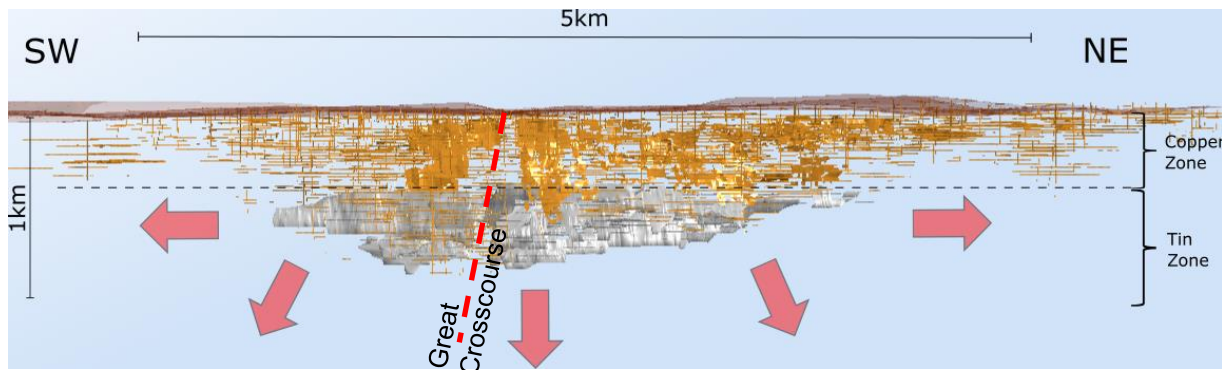
## September 2023 JORC Code (2012) Mineral Resource Estimate – Lower Mine

- 2.90 Mt Indicated Mineral Resource @ 1.50% tin – 43.6kt contained tin
- 2.63 Mt Inferred Mineral Resource @ 1.42% tin – 37.4kt contained tin

**NOTE - Mineral Resources that are not Mineral Reserves do not have demonstrated economic viability**

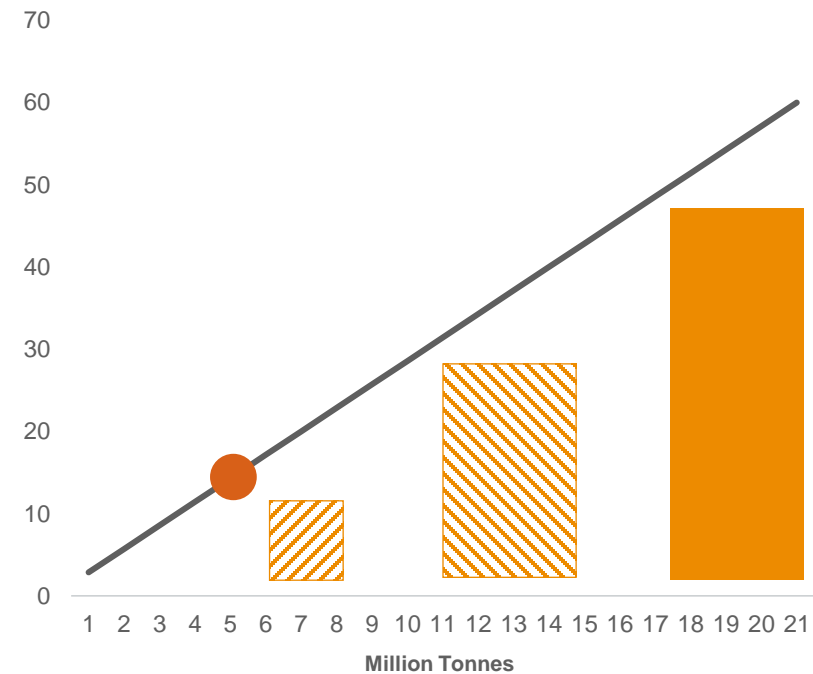
- 39% increase in tonnes and 32% increase in contained tin (Indicated category)
- 36% increase in tonnes and 16% increase in contained tin (Inferred category)

## Potential for further Mineral Resource growth



## Potential mine life extension

Mine Life (years)



*The potential quantities are conceptual in nature and there has been insufficient exploration to define a Mineral Resource. It is uncertain if further exploration will result in any of the targets being delineated as a Mineral Resource.*

- Current Mineral Resource
- ▨ Exploration potential on east of Great Crosscourse
- ▨ Exploration potential on west of Great Crosscourse
- Total Current Mineral Resource + Potential



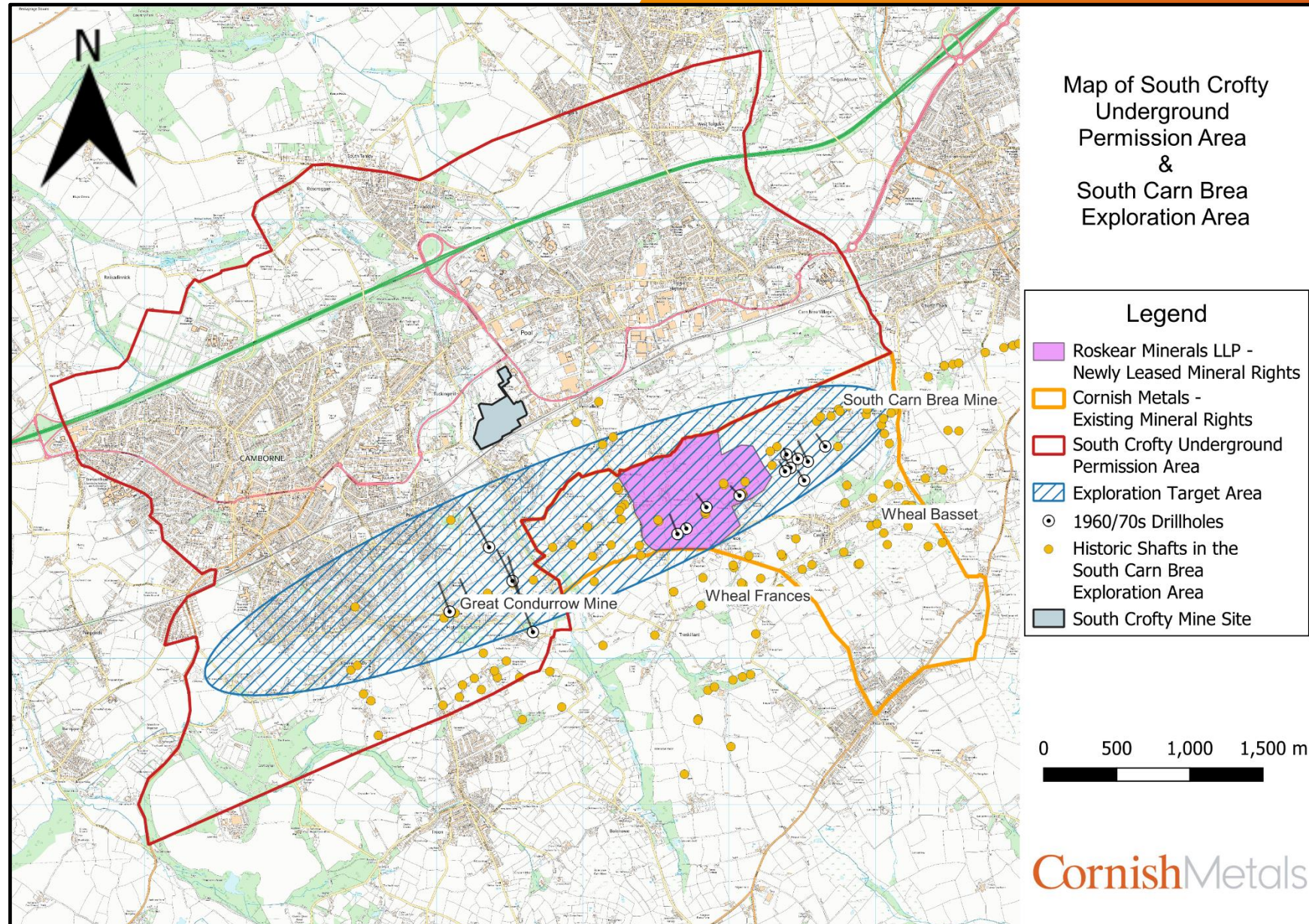
# Wide Formation

Potential to:

- Increase Mineral Resource
- Increase production rate
- Extend mine life

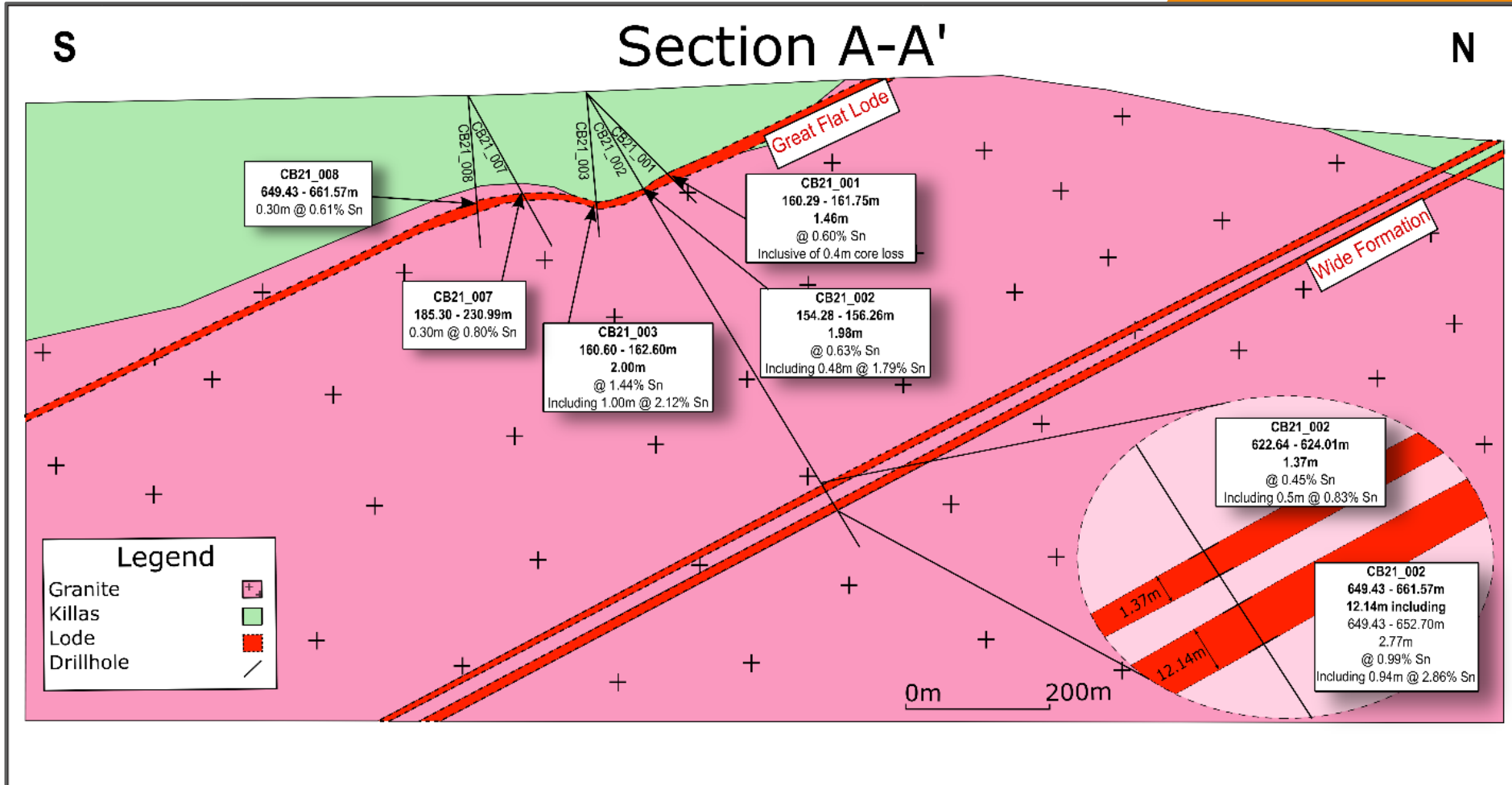
2022 drill results:

- Great Flat Lode
  - 2.24m @ 3.93% Sn
  - 3.80m @ 1.64% Sn
- Wide Formation
  - 2.77m @ 0.99% Sn





# Great Flat Lode & Wide Formation



Wide Formation:

- New discovery
- Lies parallel to and beneath the Great Flat Lode
- District Scale potential



# Current Activities

- Water Treatment Plant built
  - Mine dewatering started
- Metallurgical drill programme completed
- Ore sorting results better than expected
  - XRT 55% mass rejection and <3% metal loss
  - HLS 50% mass rejection and <5% metal loss
- New Cook's Kitchen Shaft Works underway
- Feasibility Study advancing

## Complete:

- Geotechnical testwork
- Process plant site investigation
- Headframe and hoisting analysis
- Numerical modelling for stope design
- Shaft refurbishment scheduling and costing

## In progress:

- Process plant design being finalised
- Hydrological study close to completion
- Paste backfill studies
- Market study
- Final mine design



# Targeted Timeline to Production (End-2026)





# Investment Opportunity

- 100% owner of South Crofty project
- High grade / high value project
- Fully permitted
- Existing mine infrastructure
- Significant potential to extend mine life and production throughput
- Low impact underground operation
- Growing demand for technology metals
- Opportunity for a domestic supply of tin to the UK and Europe
- Tin is essential in all electronics



# CornishMetals

## Cornish Metals Inc.

**Richard Williams**

President & CEO

**Email:** [richard@cornishmetals.com](mailto:richard@cornishmetals.com)

**Website:** [www.cornishmetals.com](http://www.cornishmetals.com)

**Twitter:** @CornishMetals

**Address:**

Suite 960 – 789 W. Pender Street

Vancouver B.C.

Canada V6C 1H2

**Phone:** +1 604 200 6664

**Toll Free:** +1 877 315 0580

---

## BlytheRay

### Financial PR

Tim Blythe: [Tim.Blythe@Blytheray.com](mailto:Tim.Blythe@Blytheray.com)

Megan Ray: [Megan.Ray@Blytheray.com](mailto:Megan.Ray@Blytheray.com)

**Phone:** +44 (0) 20 7138 3204

AIM / TSX-V : CUSN

All information ©Cornish Metals Inc. All Rights Reserved.